

# 1<sup>e</sup> Verdiepings sessie Herontwikkeling

## Woonzorgcentrum Bornholm & Eijkenhove

Bewonersbijeenkomst 1 juli 2021

# Welkom!

## 1<sup>e</sup> verdiepingssessie Holmkwartier

Start 19:00 uur

Zet alvast je microfoon op stil (mute)

Stel je vragen via de chat

Holmkwartier volgen? Meld je aan voor de nieuwsbrief!

[info@holmkwartier.nl](mailto:info@holmkwartier.nl)



*'Samen op weg naar  
een  
nieuw stukje  
Bornholm'*

# Thema's

**1 juli**

Openbare ruimte, groen en water

**6 juli**

Wijkvoorzieningen, parkeren en verkeer

# Programma 1 juli

- Proces door Amstelring
- Plan Holmkwartier door Achitecten Cie
- Openbare ruimte, groen en water door Buro Sant en Co
- Beantwoording vragen
- Afsluiting

Oefenen met  
Menti.com

**Ga naar:**  
**[www.menti.com](http://www.menti.com)**

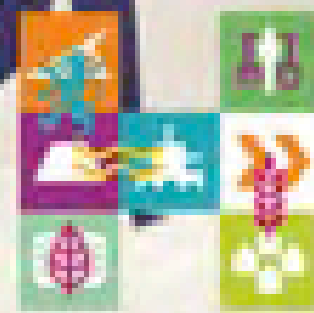
**Vul de code in:**

**8344 5266**

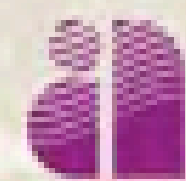
# HOLMKWARTIER VERDIEPINGSSSESSIES

AMSTELRING - GEMEENTE HAARLEMMERMEER - SANT EN CO - DE ARCHITEKTEN CIE

01 JULI 2021



gemeente  
Haarlemmermeer

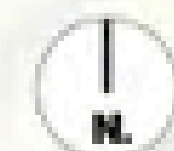
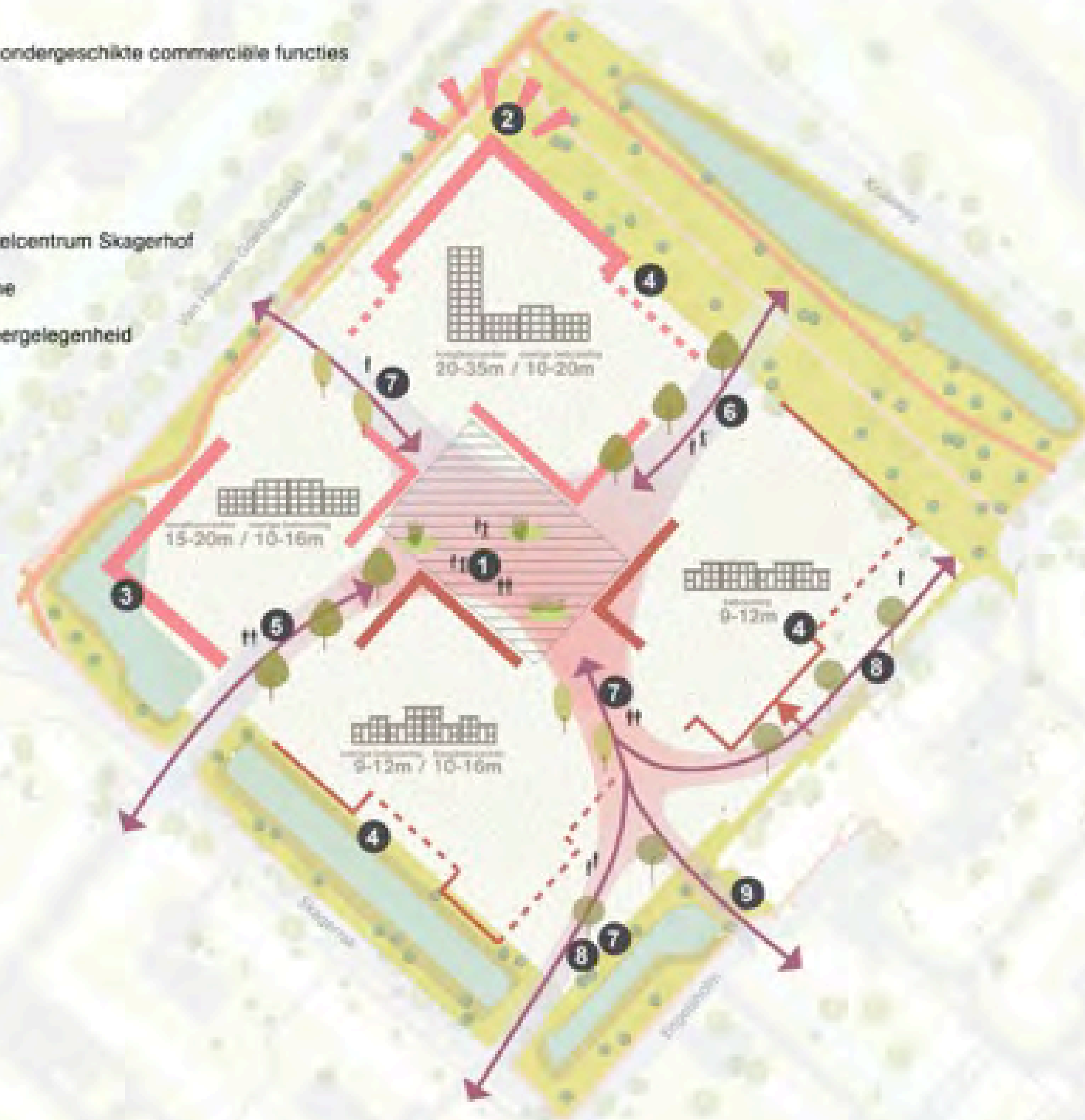


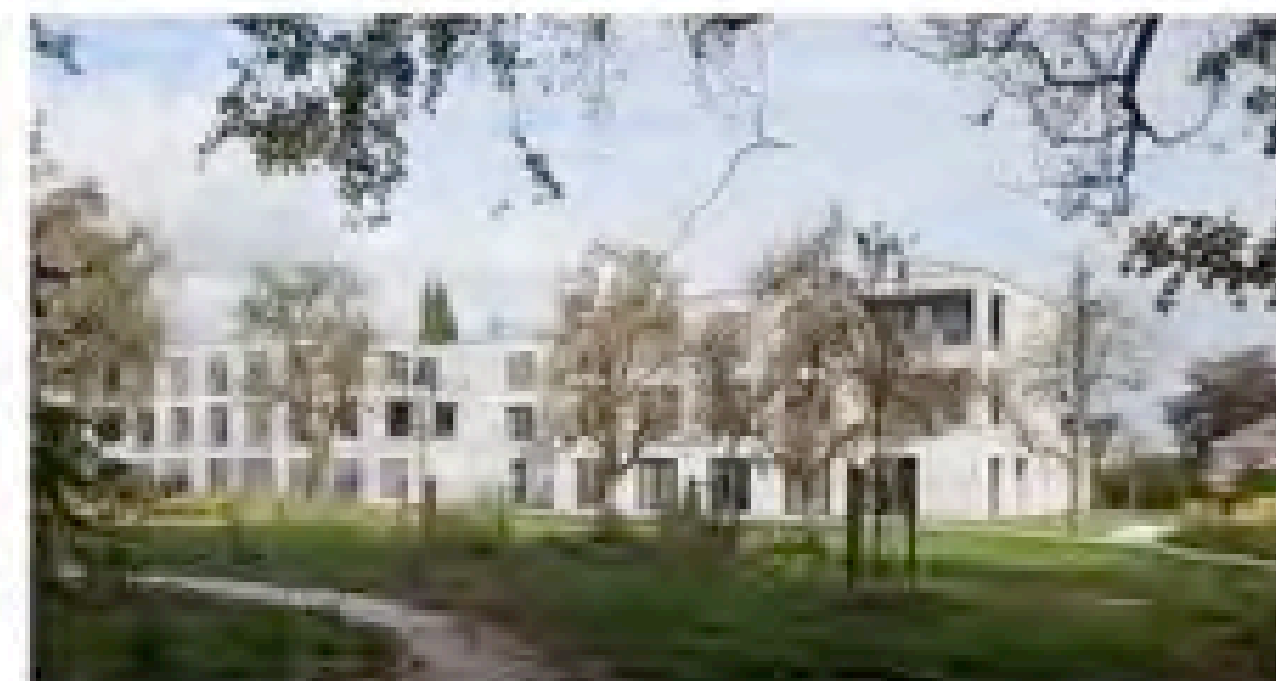
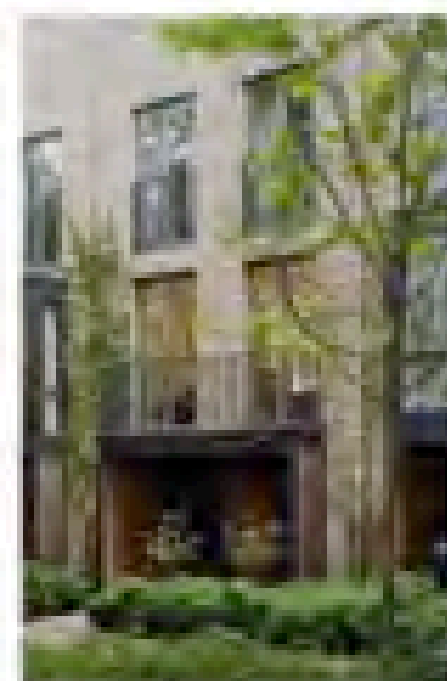
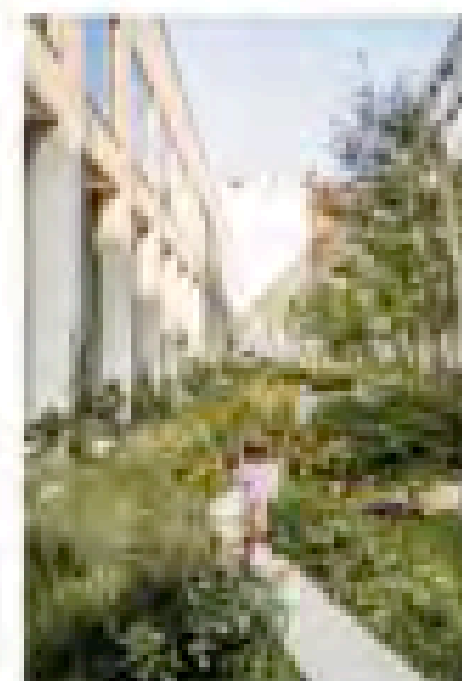
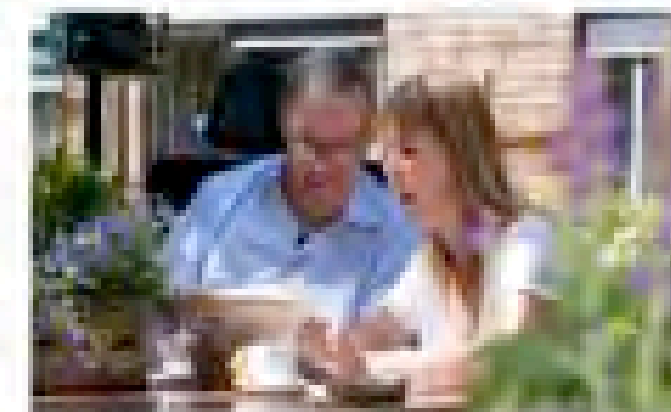
Amstelring

BURO SANT EN CO  
landschapsarchitectuur

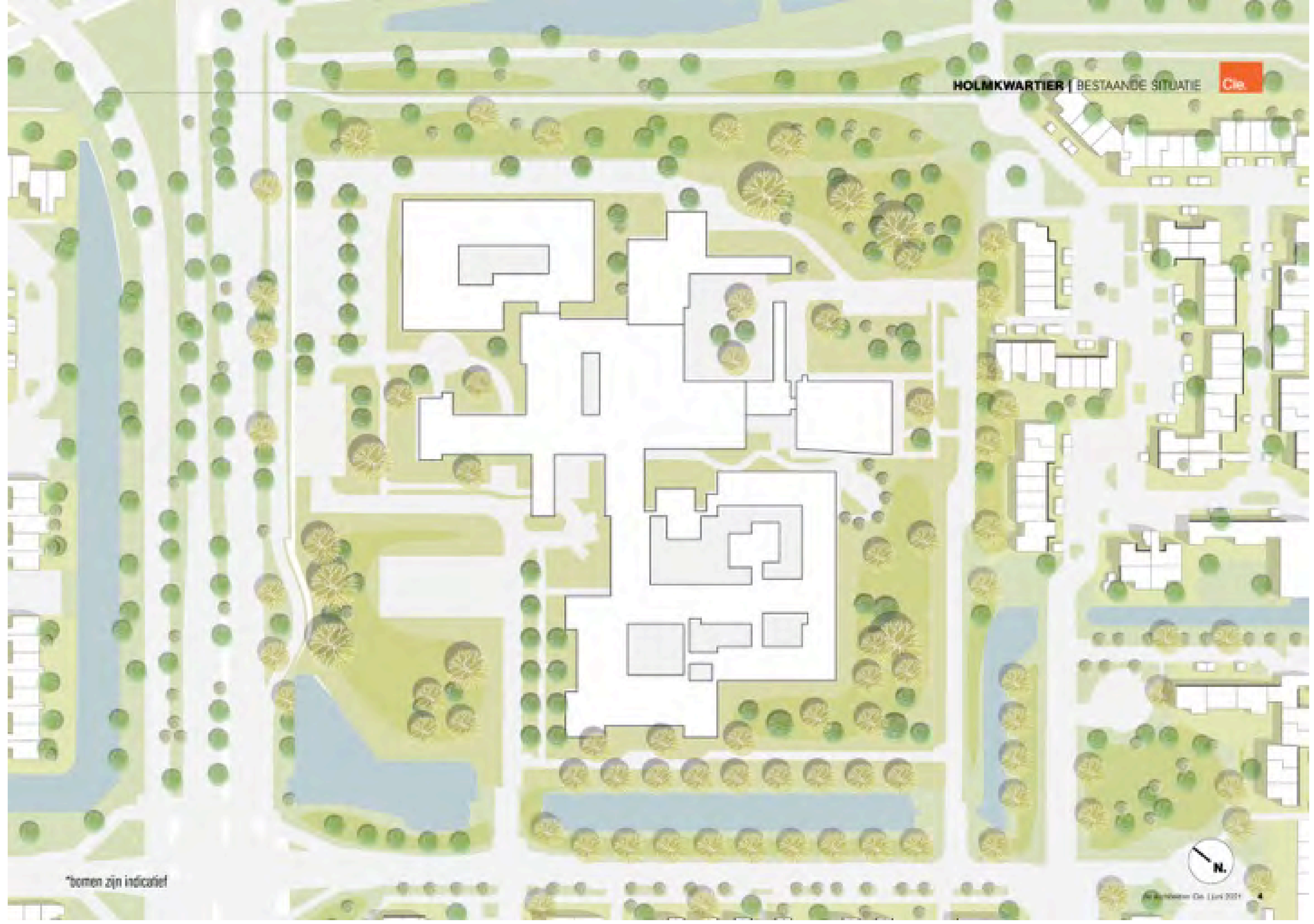
Cie.

- 1 Ontmoetingsplein met zorgfuncties en ondergeschikte commerciële functies
- 2 Hoger accent aan kruising
- 3 Kenmerkende uitstraling naar wijk
- 4 Verspringende rooilijnen
- 5 Groene wandelverbinding richting winkelcentrum Skagerhof
- 6 Groene wandelverbinding naar parkzone
- 7 Wandelverbinding met eventueel parkeergelegenheid
- 8 Groene ontsluiting met parkeren
- 9 Groene wandelverbinding naar de wijk





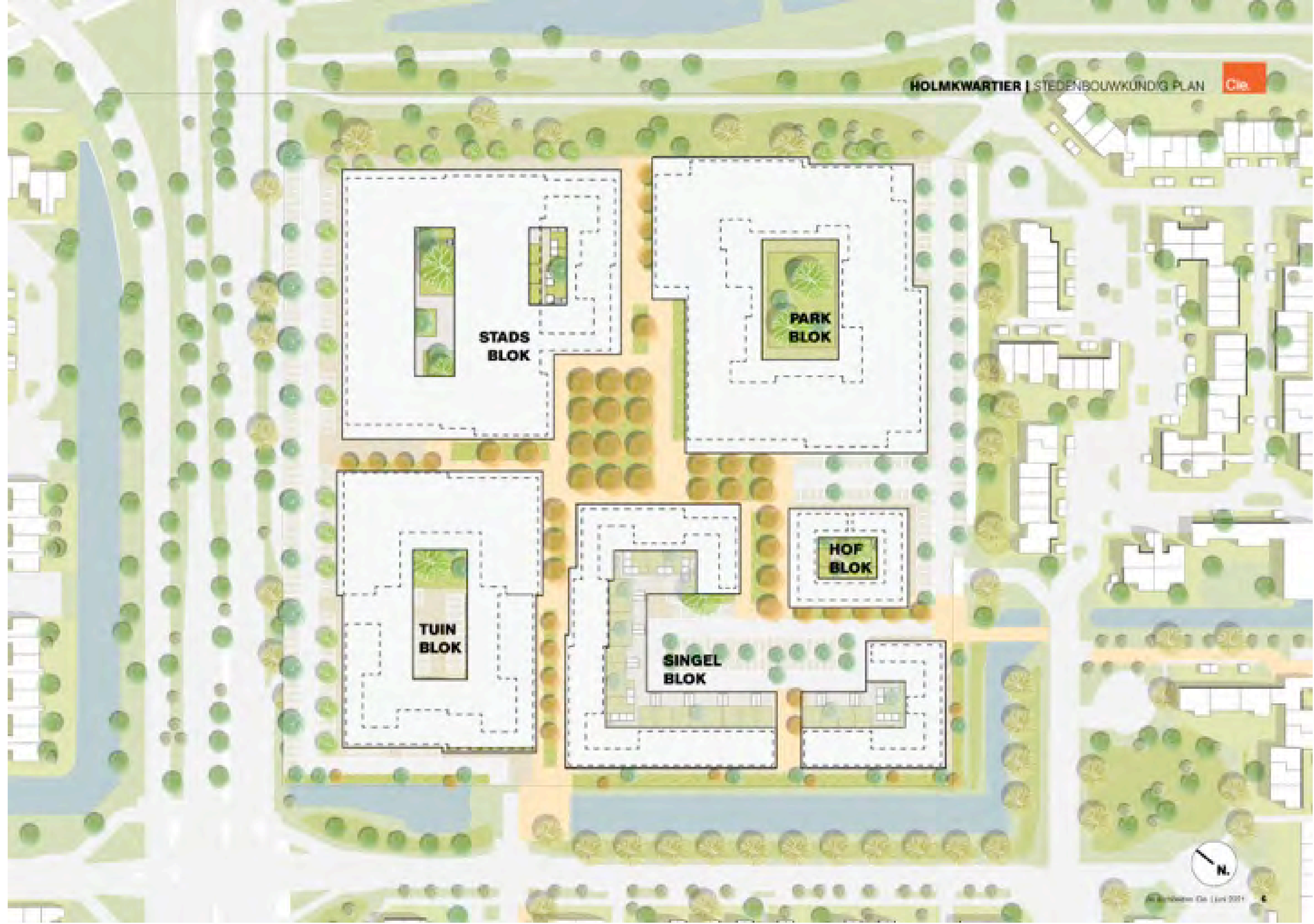




\*bomen zijn indicatief





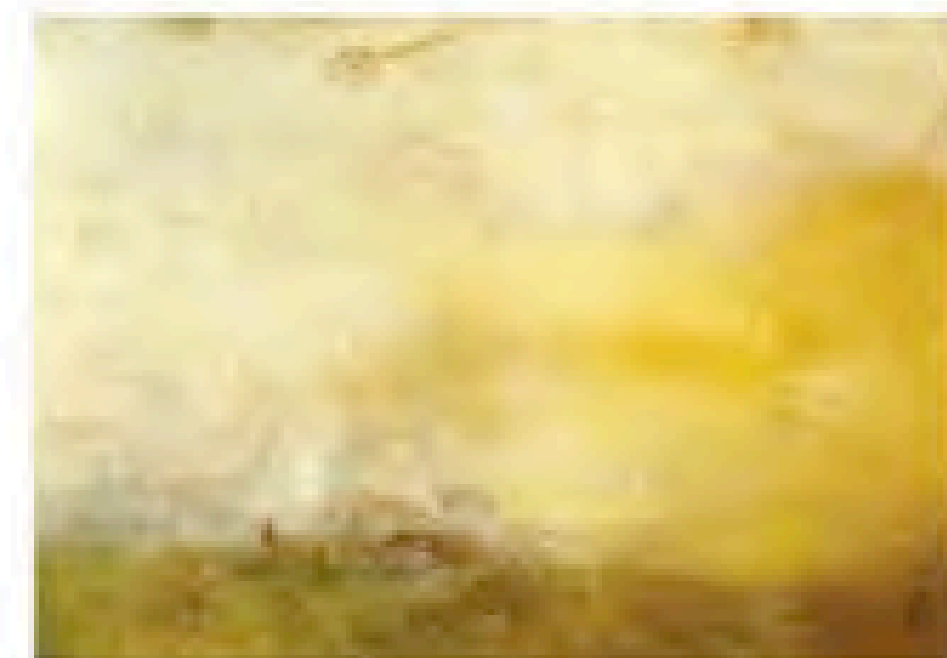
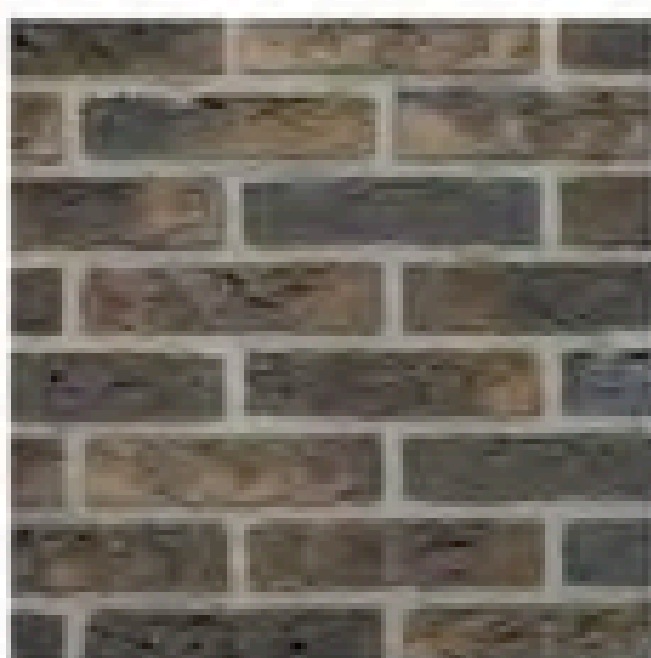
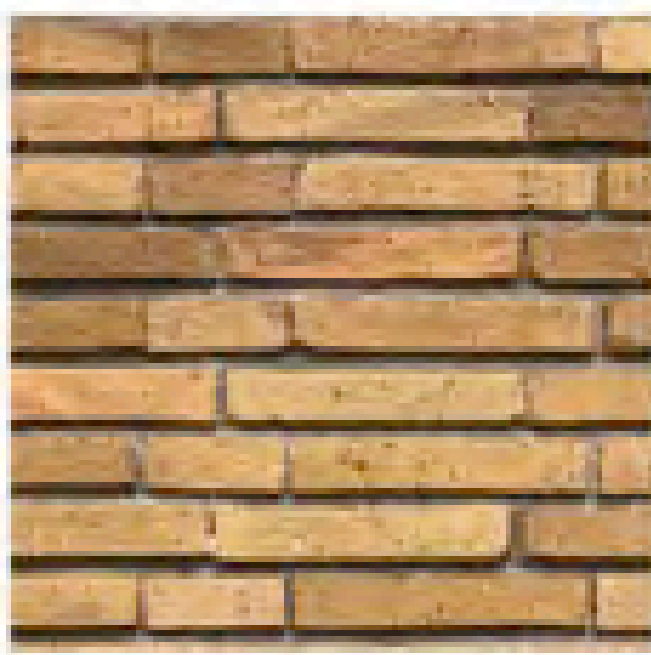
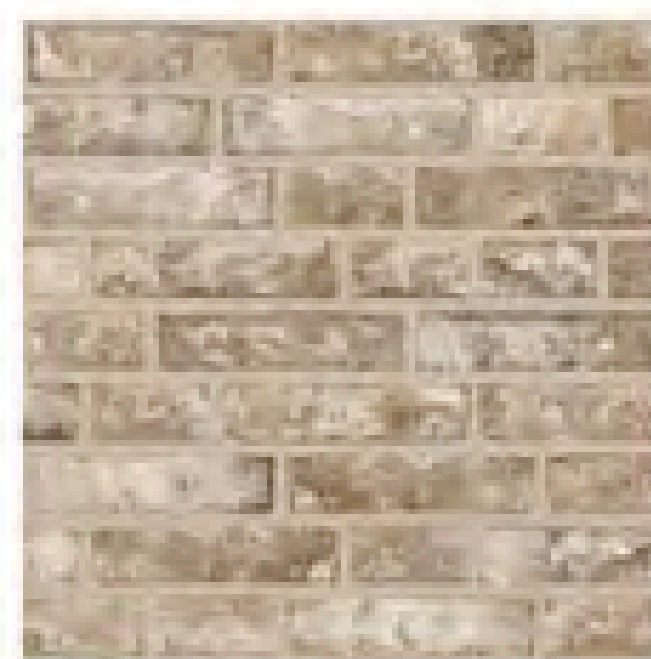
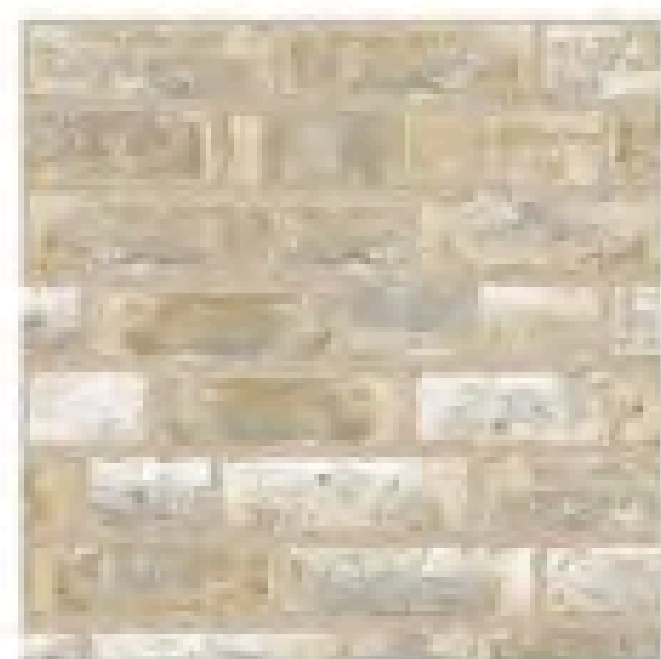


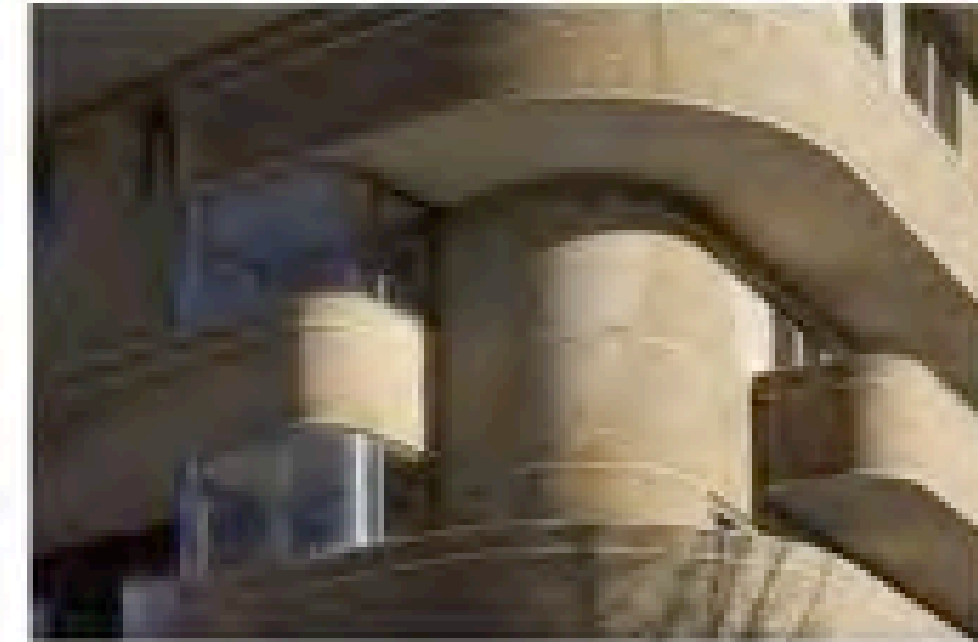




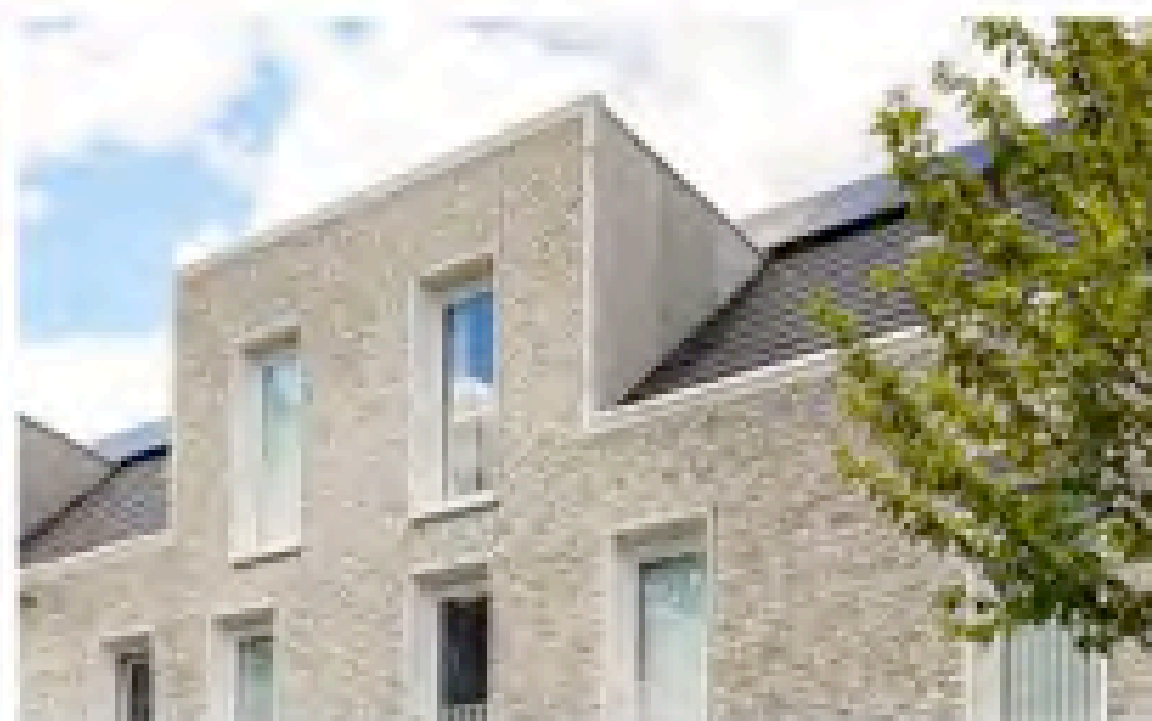
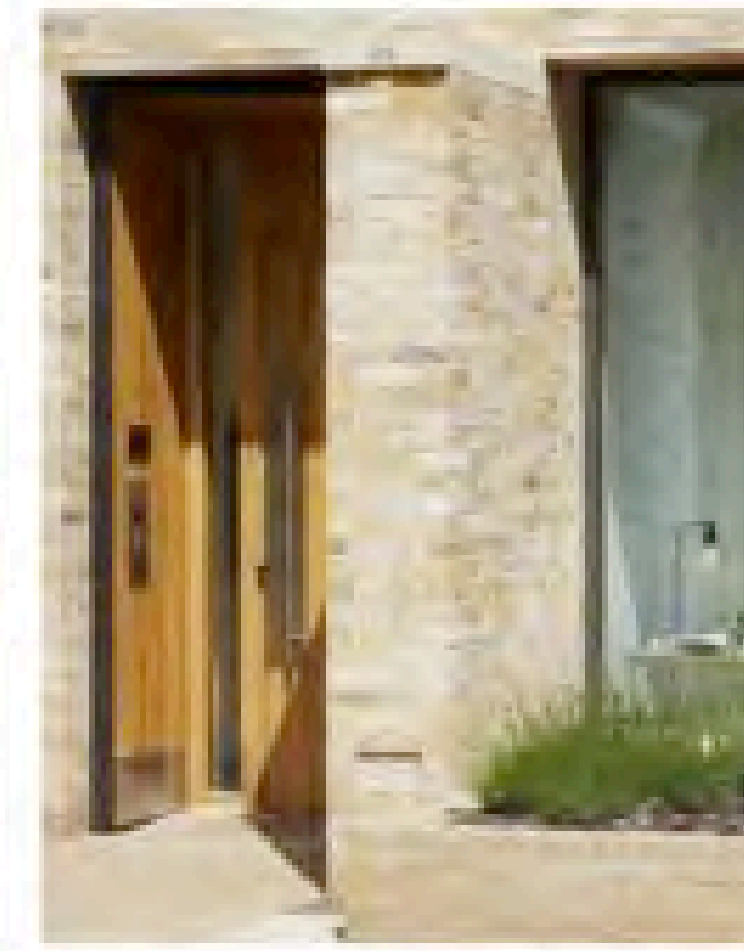
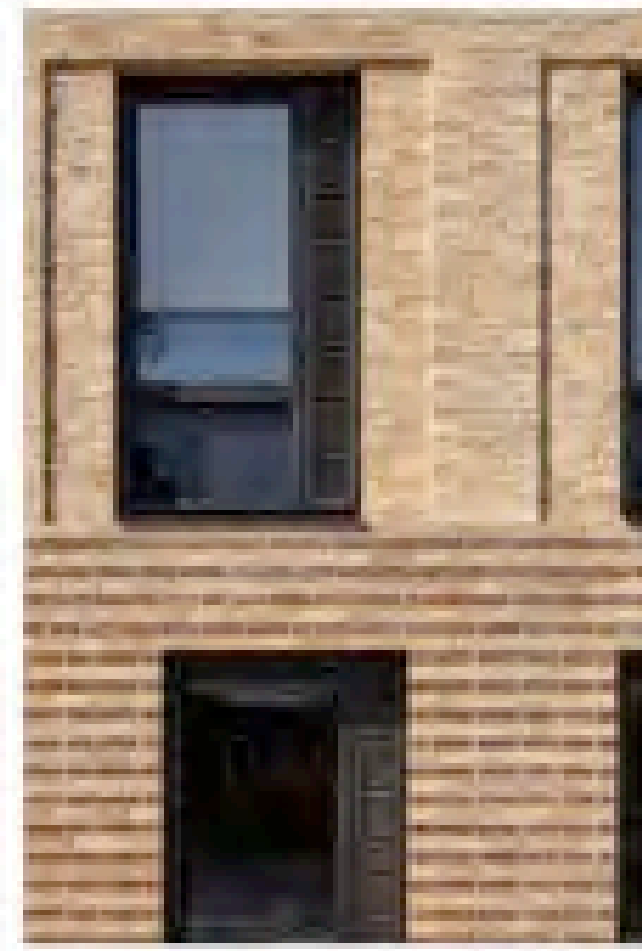
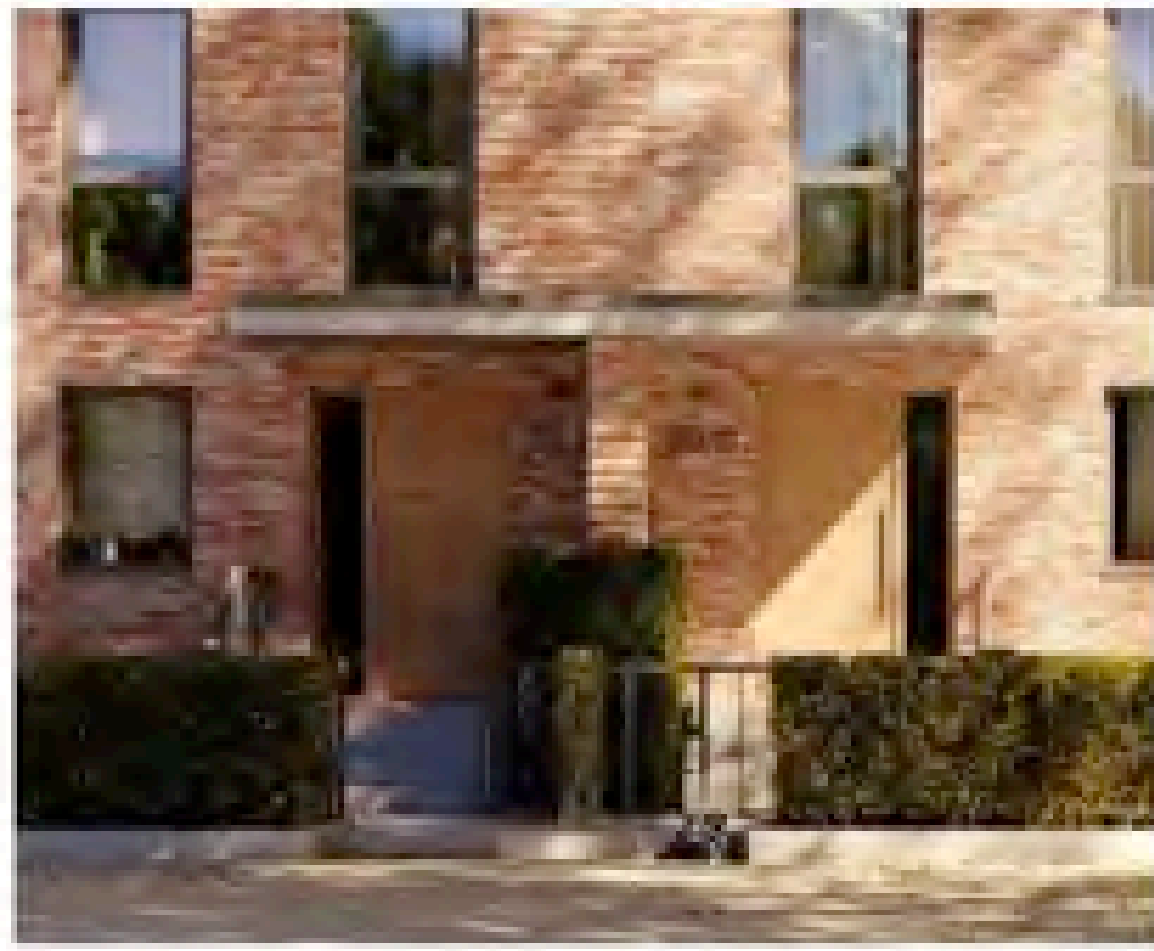


William Turner  
*"Zonsopgang met zeemonsters"*















Plan  
Holmkwartier

Deel 1  
Menti.com

**Ga naar:**  
**[www.menti.com](https://www.menti.com)**

**Vul de code in:**

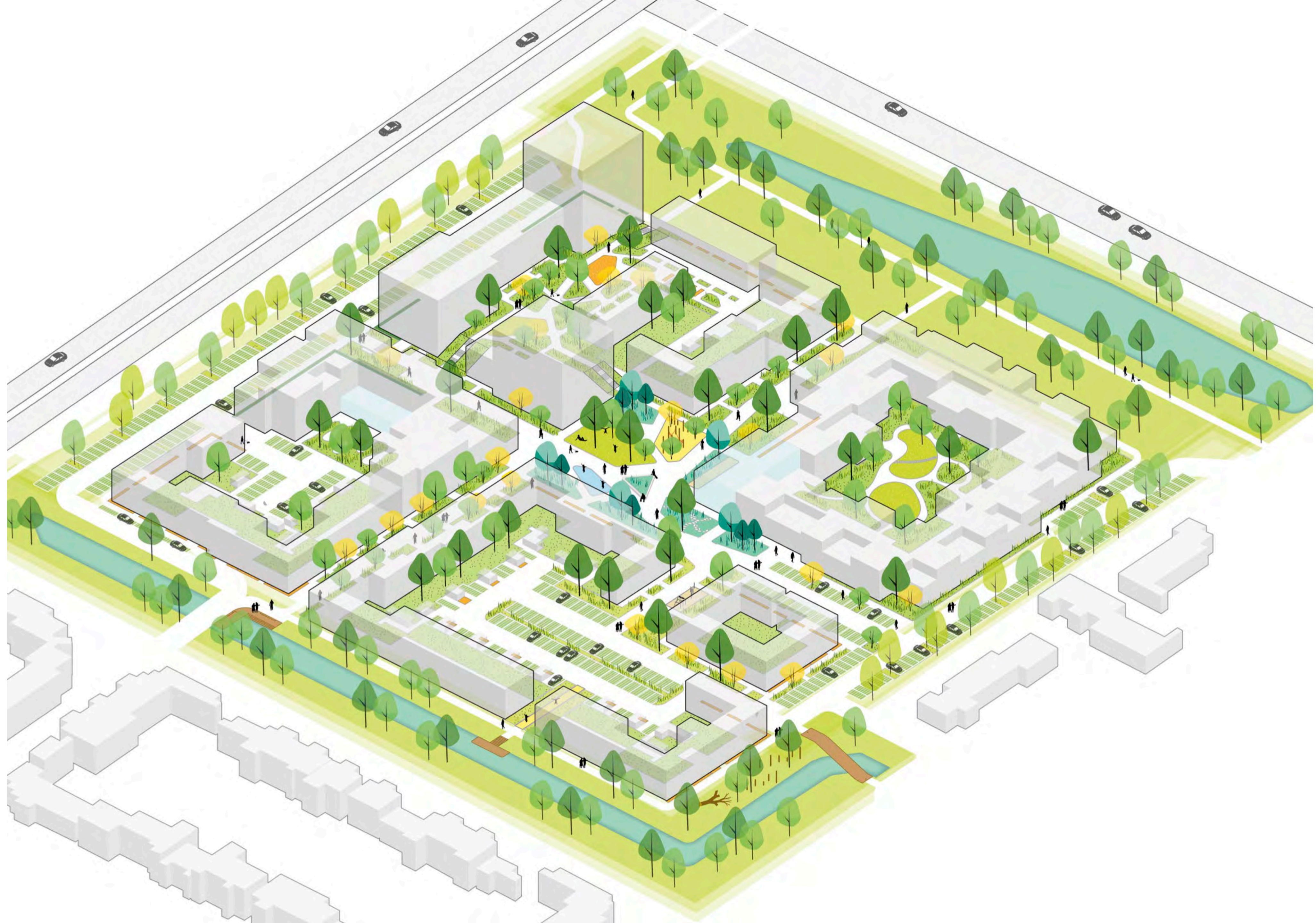
**6447 8983**

01-07-2021

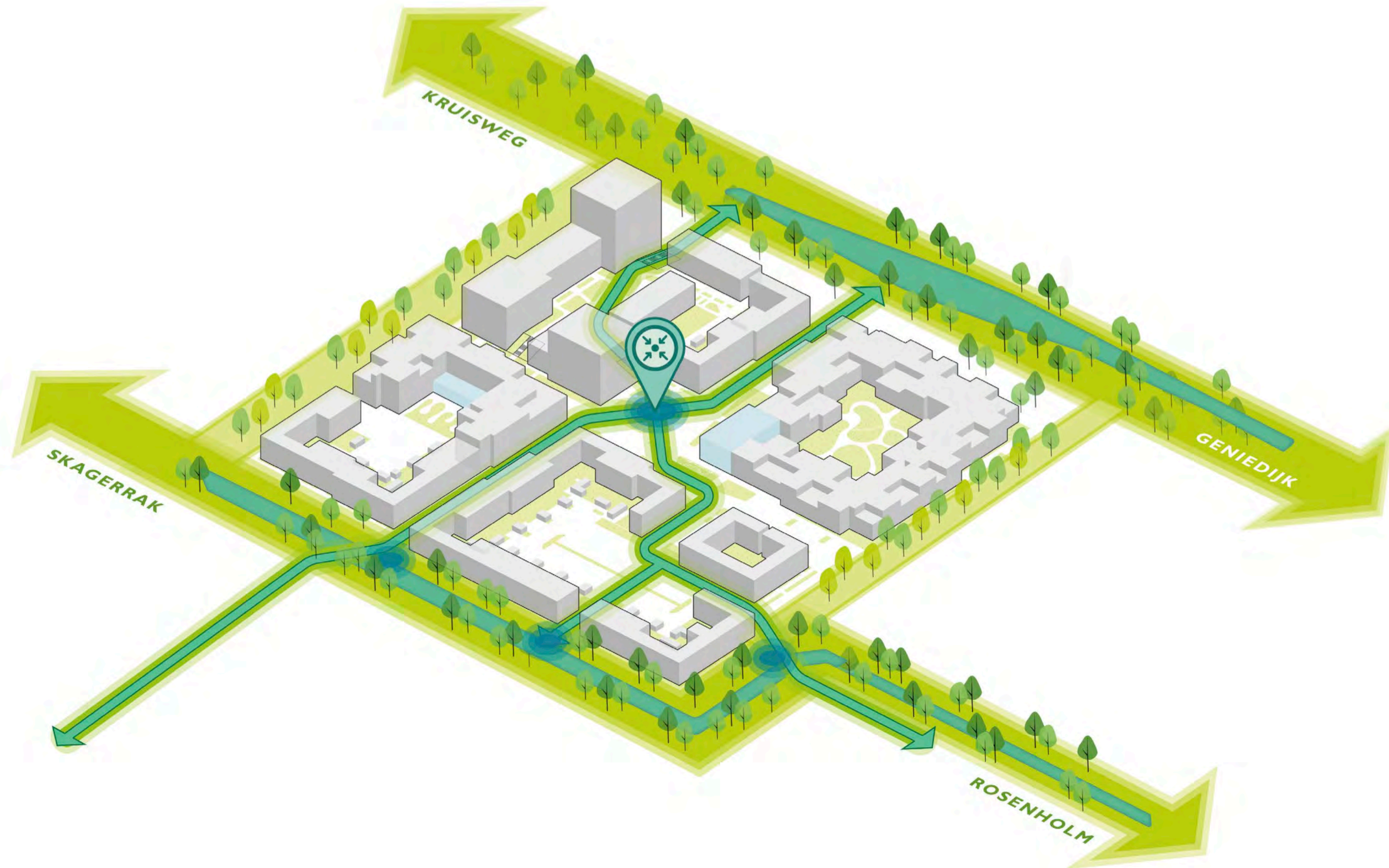
HOLMKWARTIER HOOFDDORP  
VOORLOPIG ONTWERP LANDSCHAP

**BURO SANT EN CO**  
LANDSCHAPSARCHITECTUUR



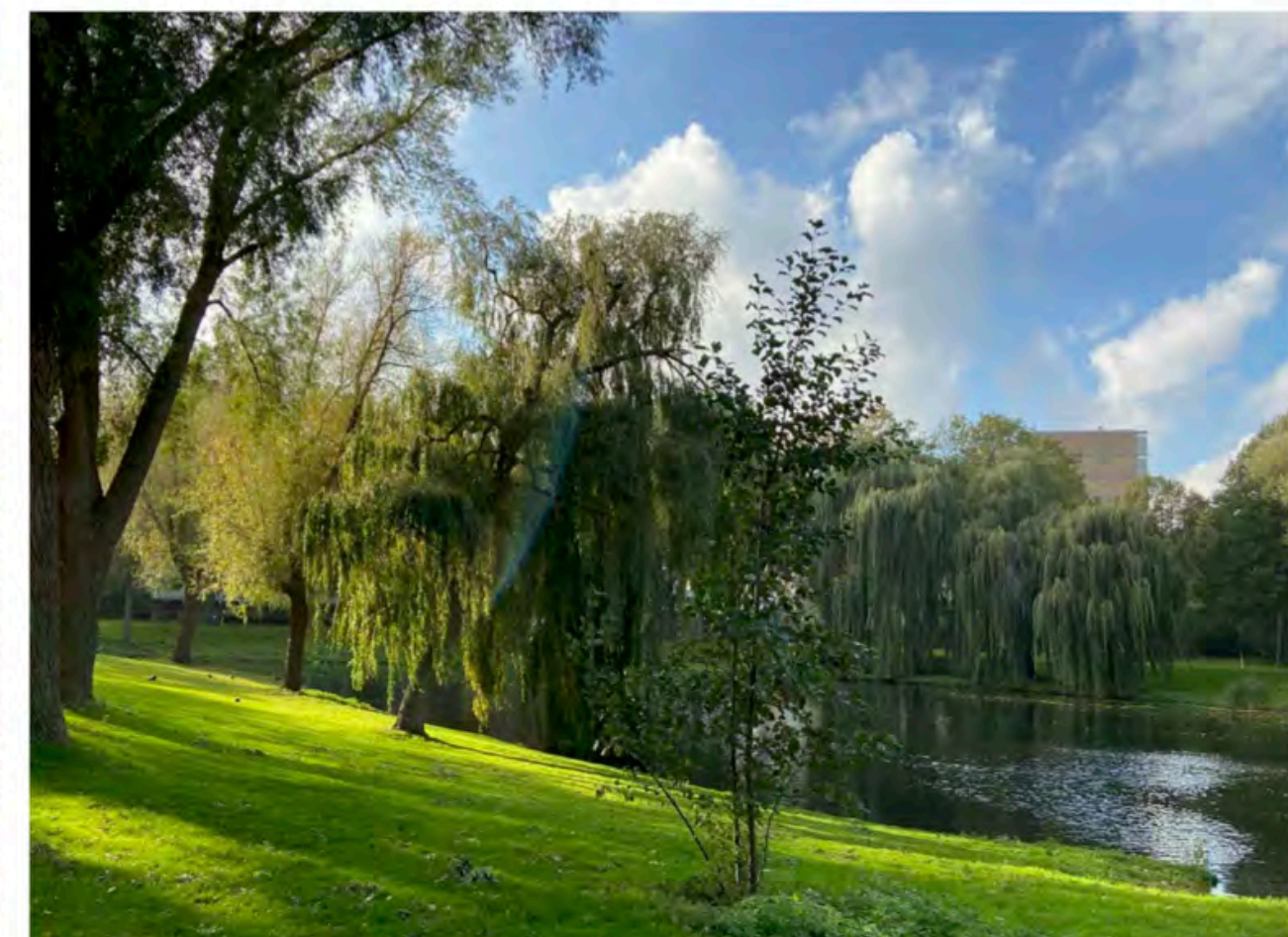
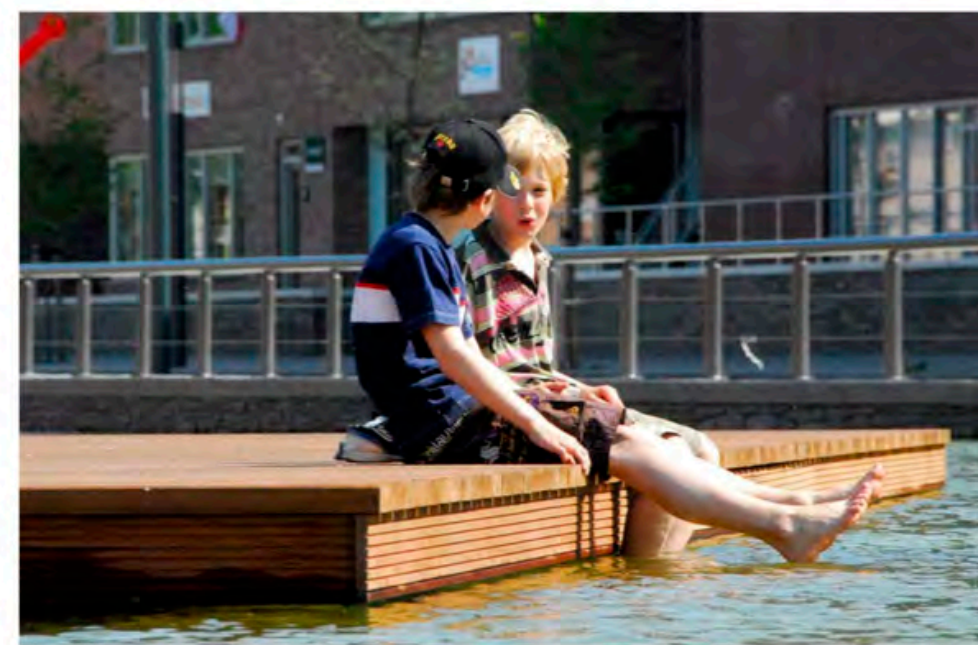
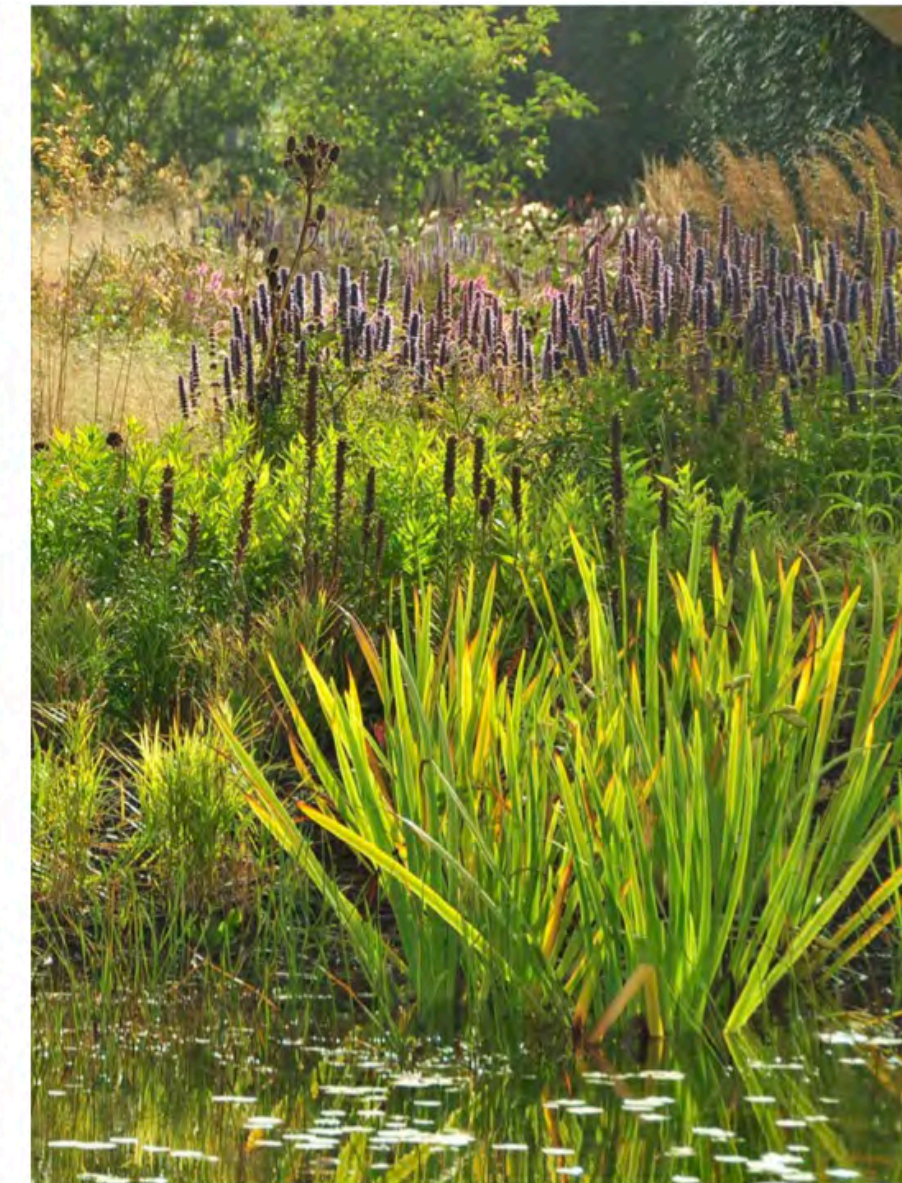


# GROENBLAUWE RANDEN VERVLECHTEN

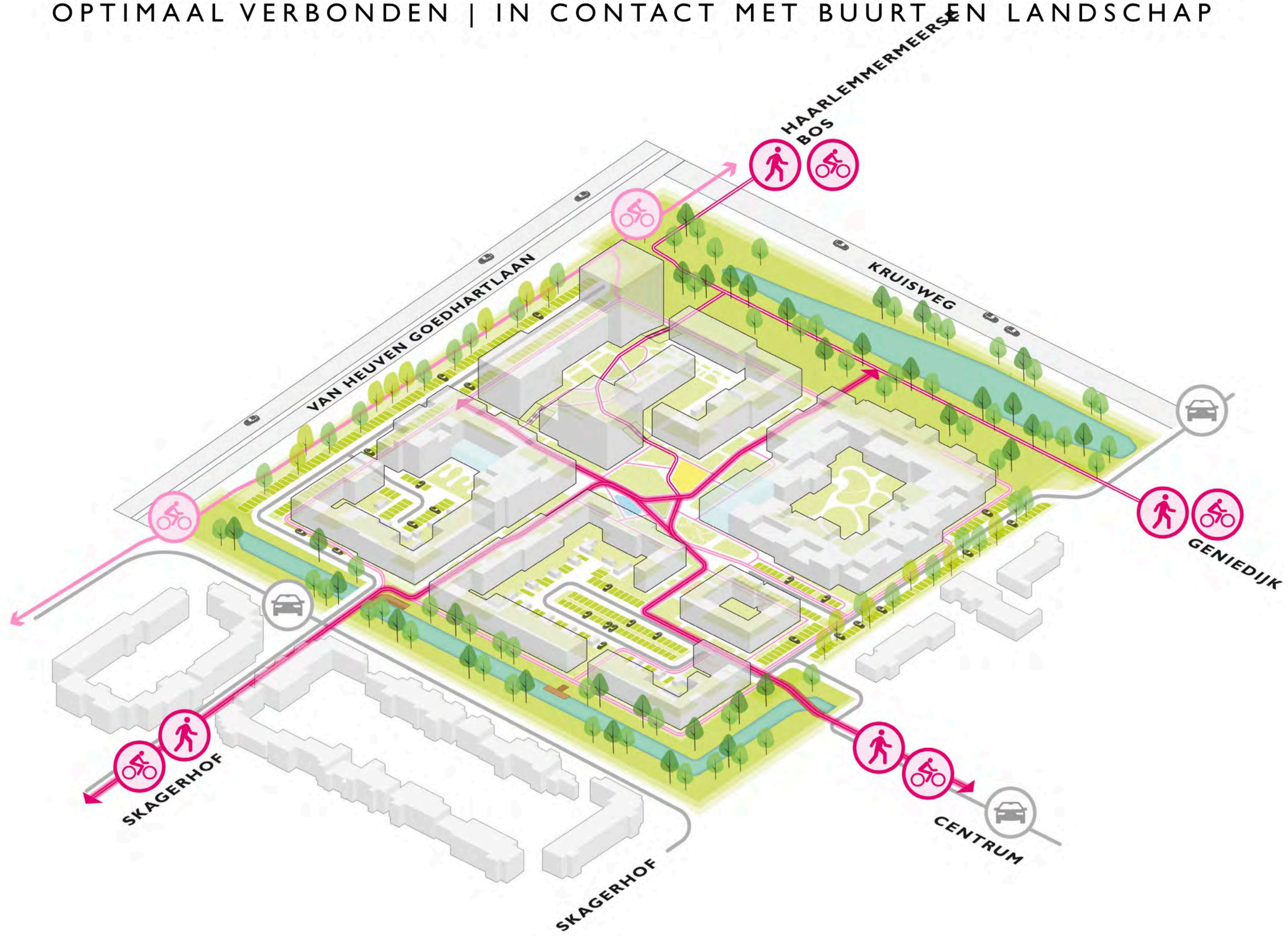




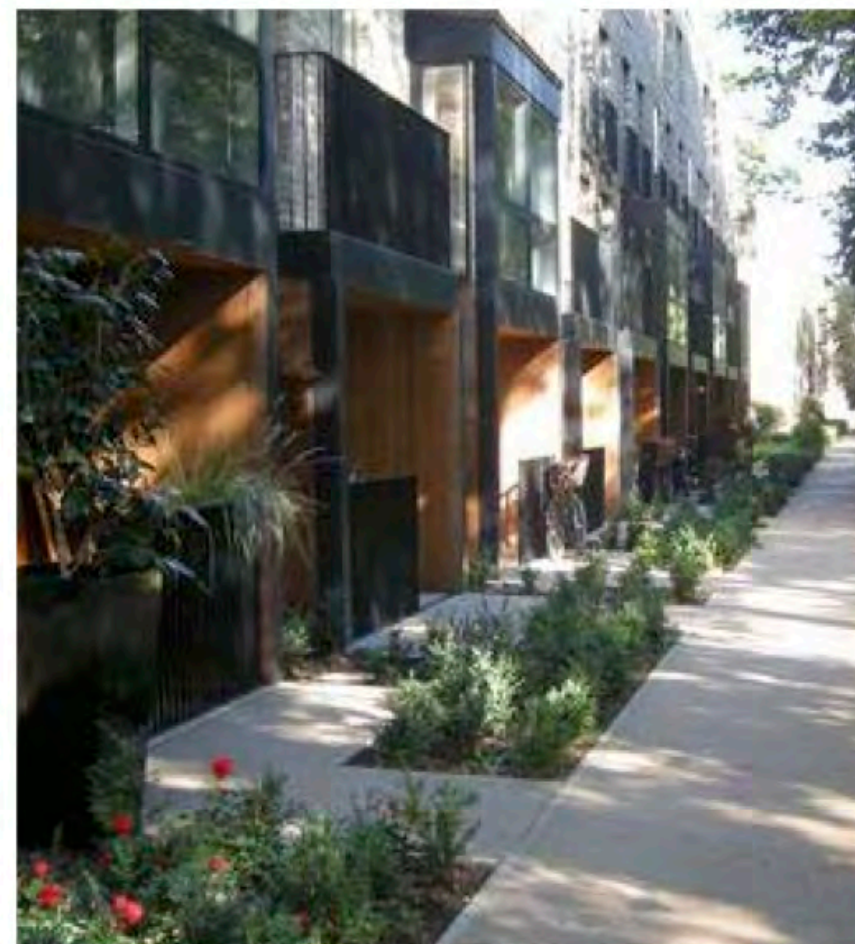
# GROENBLAUWE KWALITEIT IN DE RANDEN



# OPTIMAAL VERBONDEN | IN CONTACT MET BUURT EN LANDSCHAP

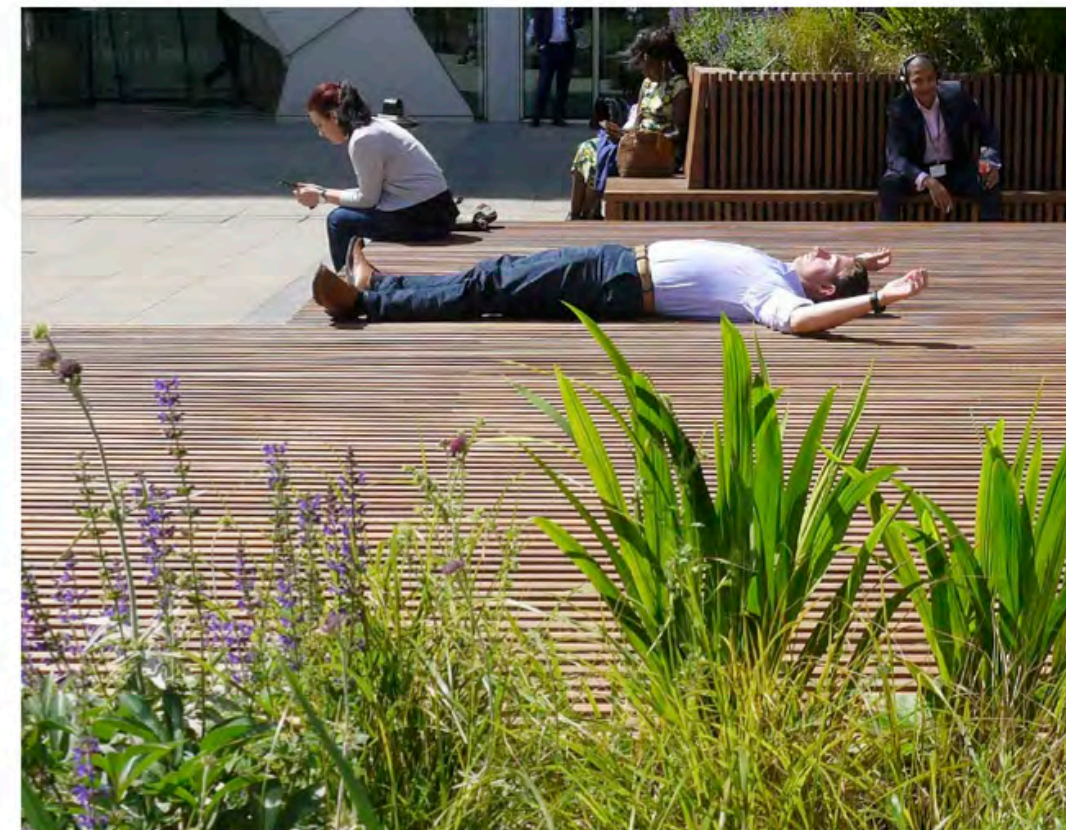


# OPTIMAAL VERBONDEN | CONTINUÛTEIT VAN EEN AUTOVRIJ TAPIJT





# PLEKKEN VAN RUST EN PLEKKEN VAN ONTMOETEN

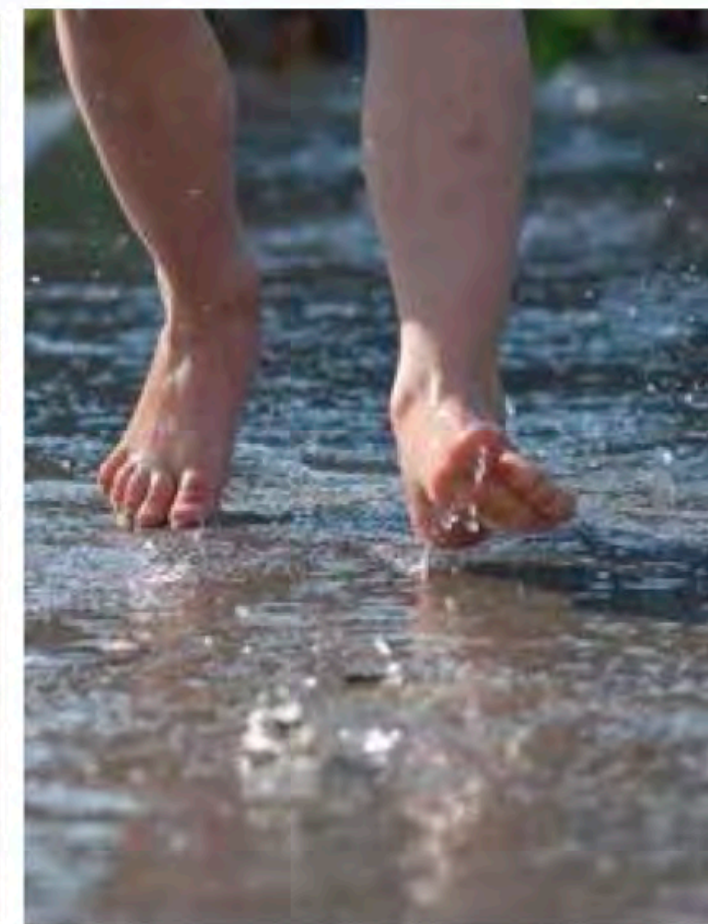
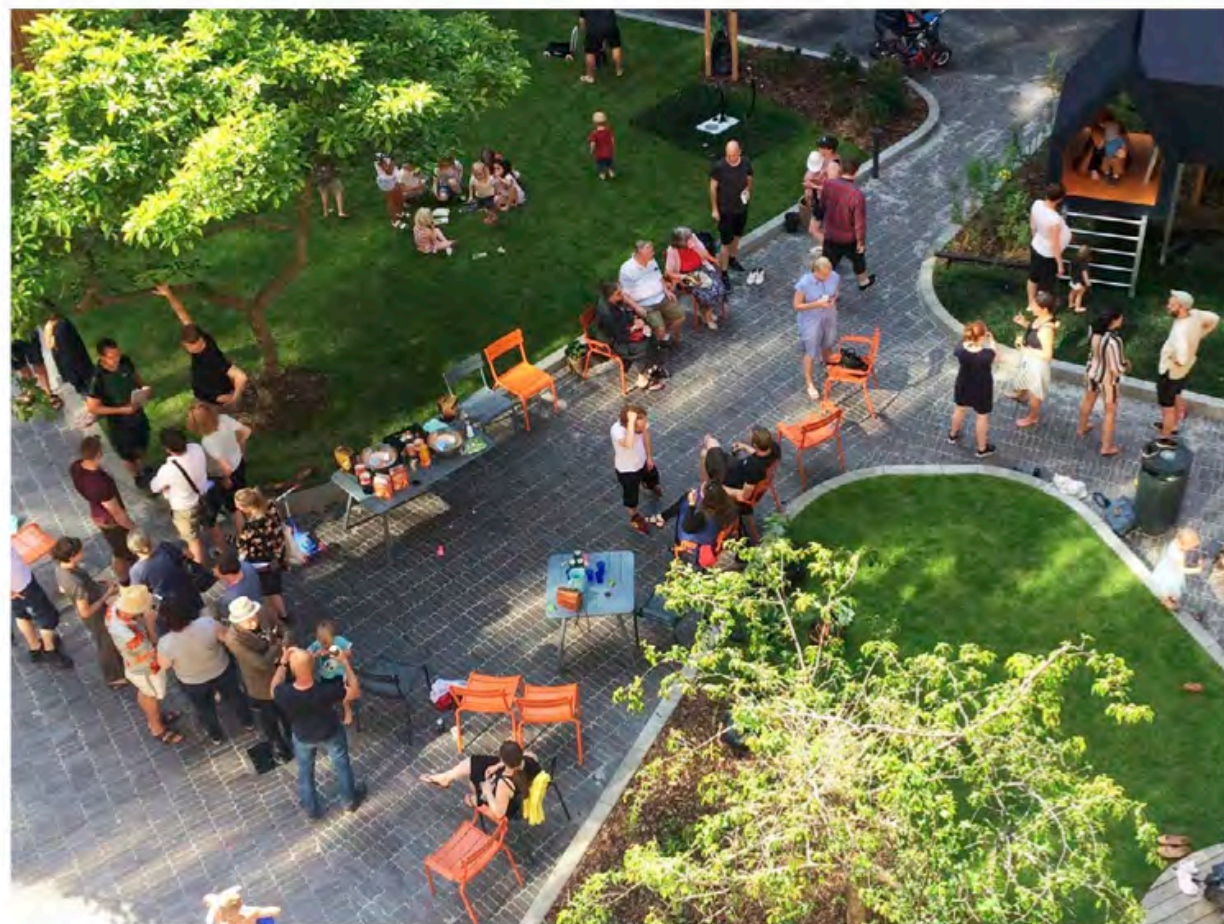
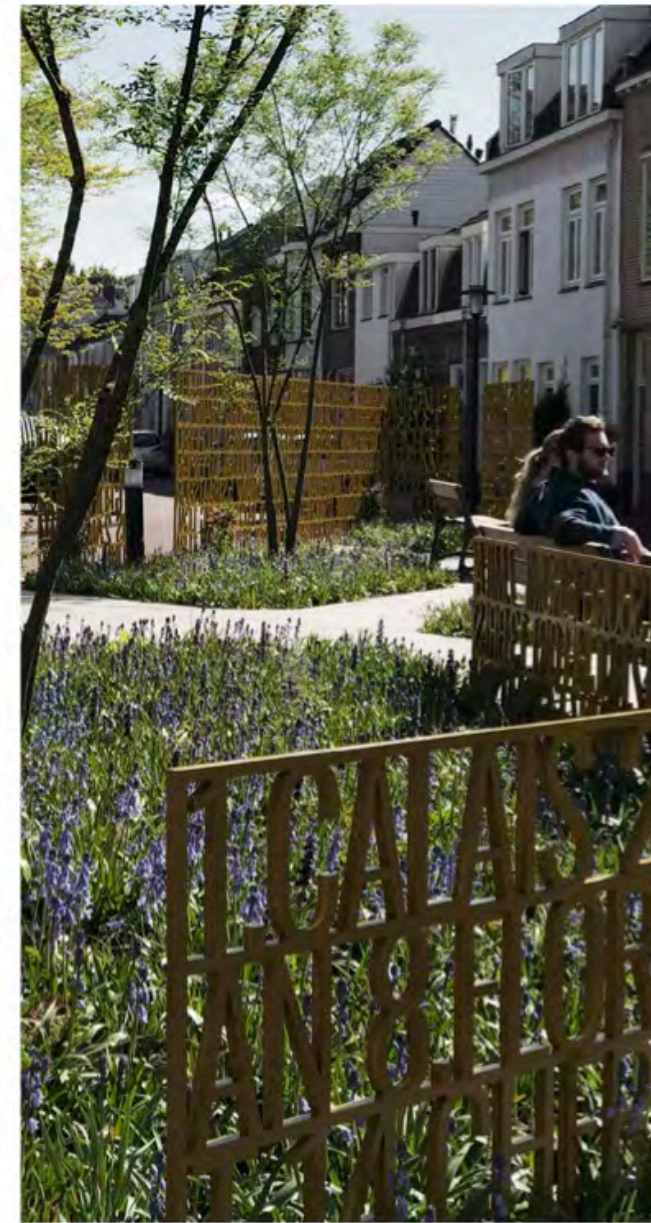




# BORNSE PLEIN



# BORNSE PLEIN

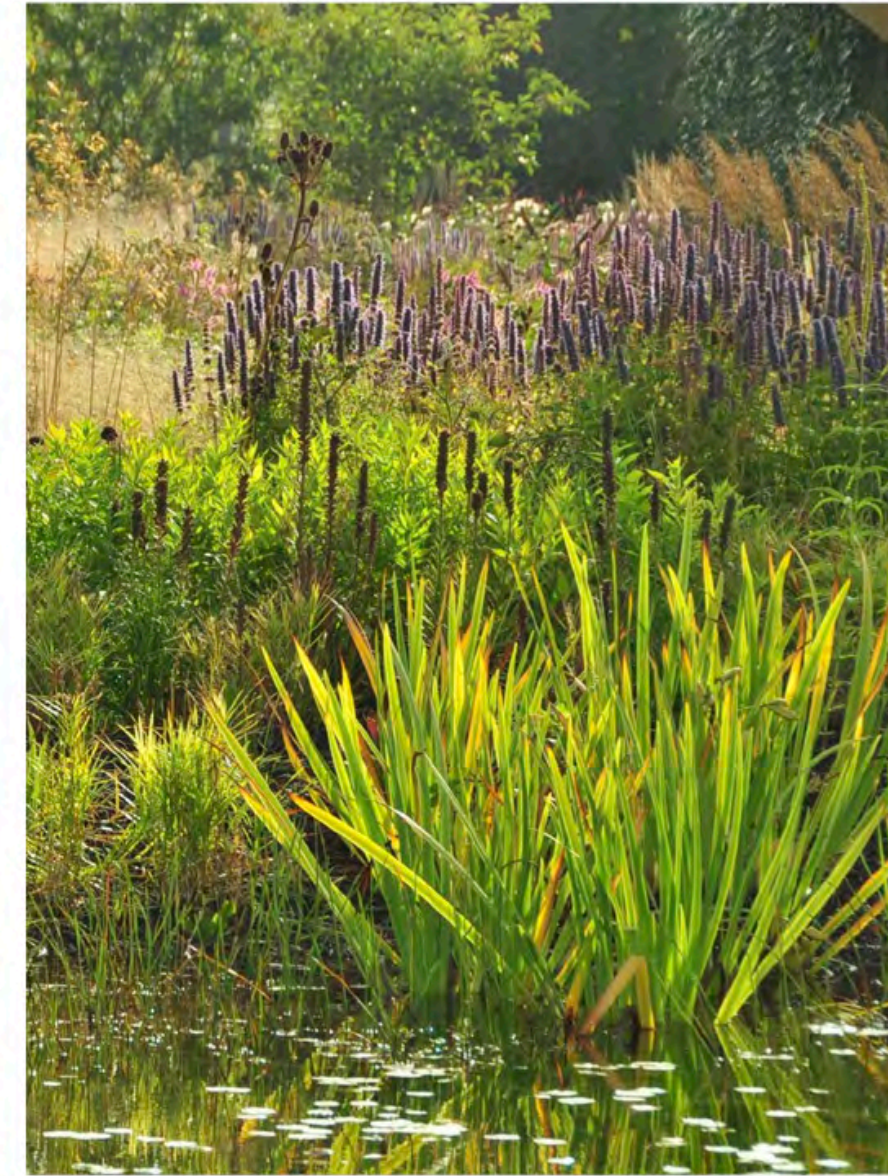




# GROEN BLAUWE ENTREES



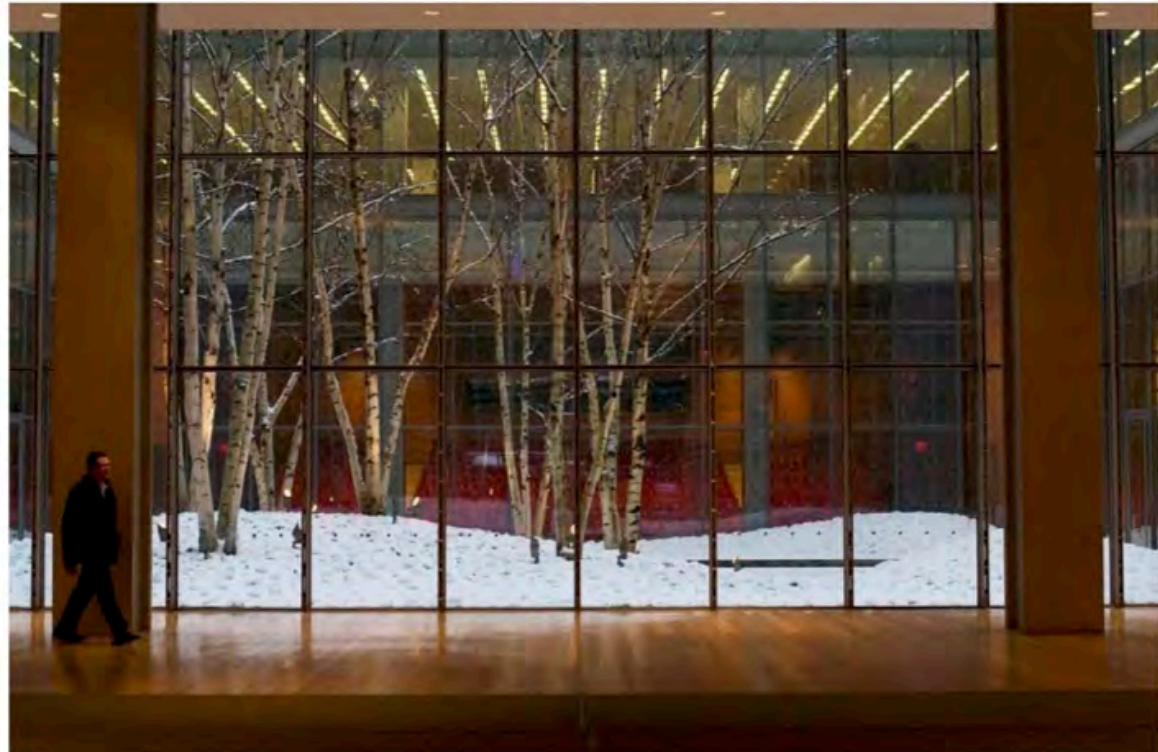
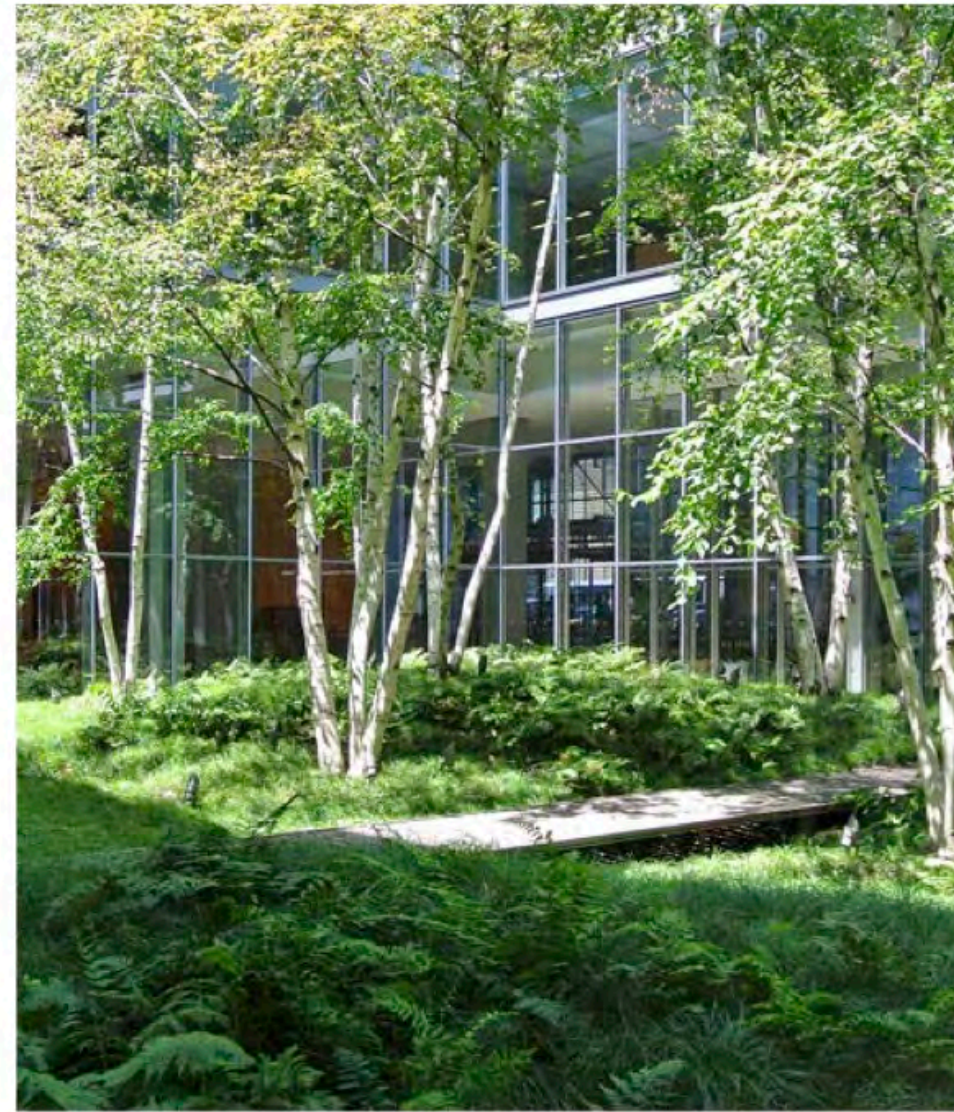
# GROEN BLAUWE ENTREES



# PRIVATE BINNENTUIN



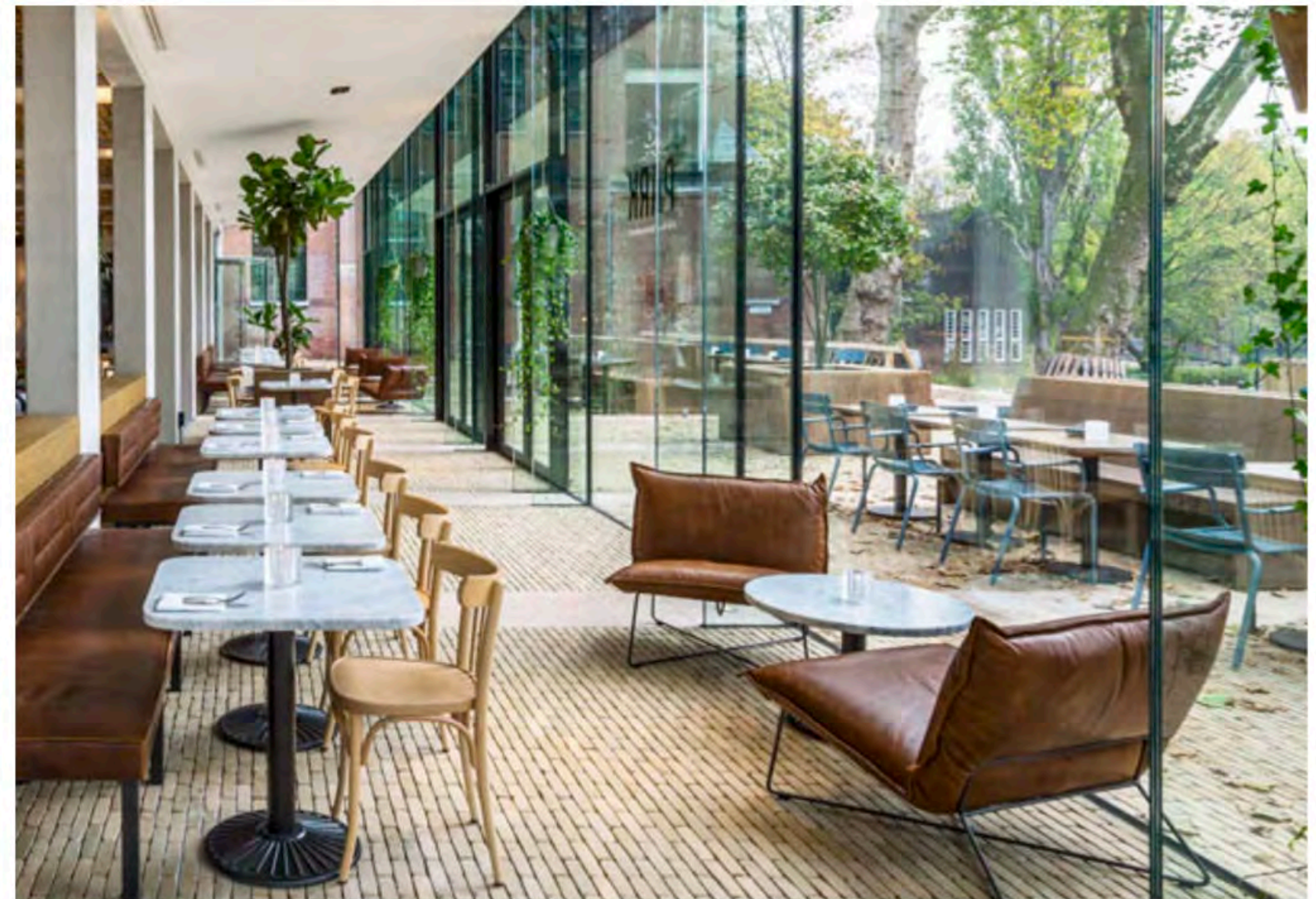
# PRIVATE BINNENTUIN



# PRIVATE BINNENTUIN



# PRIVATE BINNENTUIN



Plan  
Holmkwartier

Deel 2  
Menti.com

**Ga naar:**

**[www.menti.com](https://www.menti.com)**

**Vul de code in:**

**7721 9814**

Meedenken en - werken  
aan  
*Bornholm met elkaar?*

Meld je aan bij  
[www.wijkraadbornholm.nl](http://www.wijkraadbornholm.nl)

**Nieuws en meer vind je op  
[www.holmkwartier.nl](http://www.holmkwartier.nl)**

Holmkwartier is een gebiedsontwikkeling van Amstelring.

Vragen of contact? Via [info@holmkwartier.nl](mailto:info@holmkwartier.nl).